



**Organizational/Supervisory/Hierarchy Charts**  
**June 15, 2011**

6/15/2011

### Legend with Total WVU Paid Positions

Administrator  
10  
(3 are NC,  
1 is FN)

Career Transition  
2

Faculty Agents  
110  
(1 FEAP)

Classified Staff  
193

Agents in  
Training  
3  
FN's

County paid  
positions  
Secretary ~ 39  
Prog Asst. ~10

Faculty  
70

Research Corp  
Classified  
5

Non Classified  
(NC)  
9

FEAP  
14

Visiting  
3

Mountaineer Temp. & Grad Assistant positions are not included

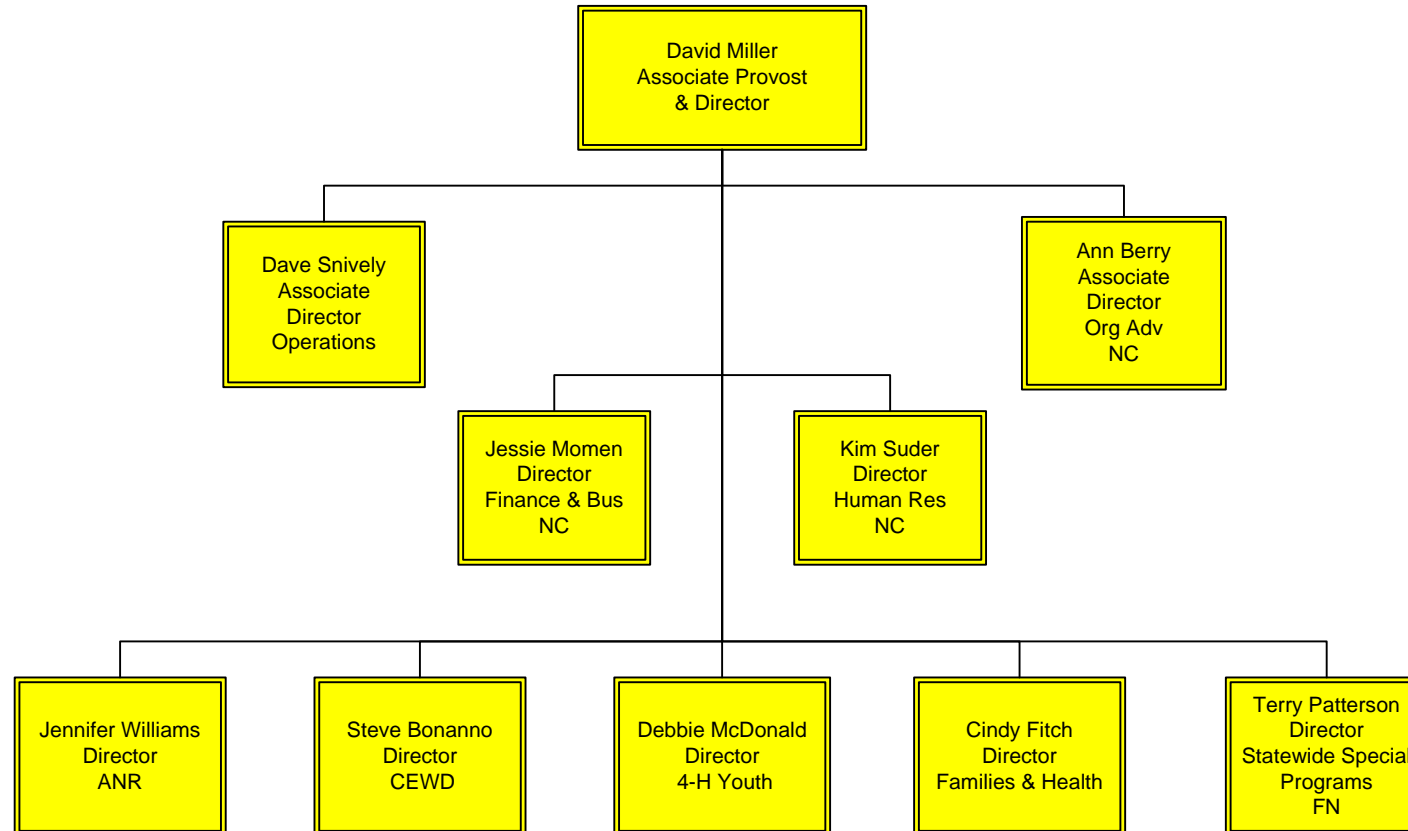
**Position Key**  
Black lettering = filled positions  
Red Lettering = unresolved vacancy  
Green Lettering = approved vacancy

**Supervision Key**

Admins	10
Faculty	10
Faculty Agents	61
Non-Class	4
FEAP	3
<u>Classified</u>	<u>23</u>
Total	111

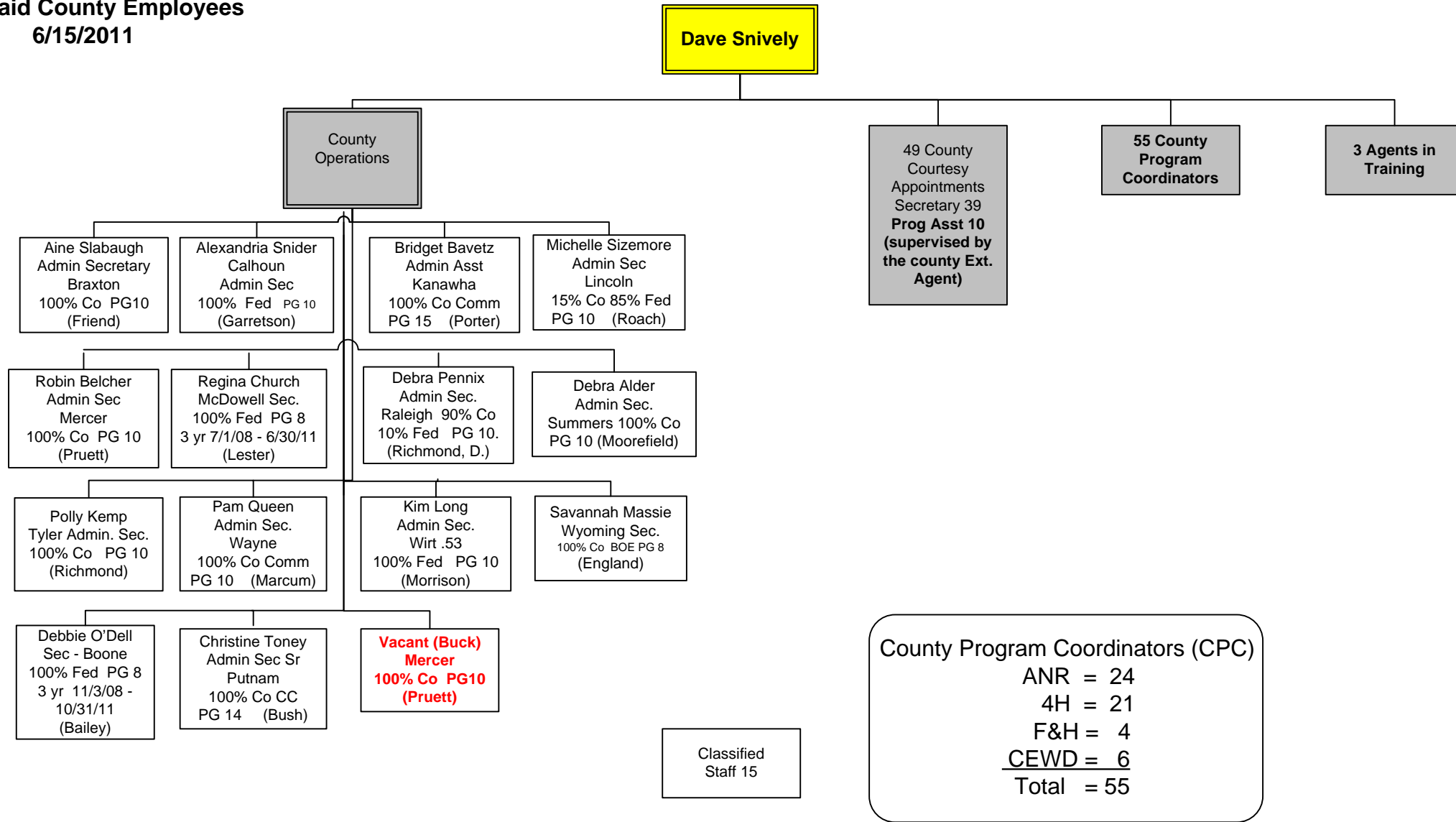
WVU Paid Positions	417
County Paid Positions	<u>49</u>
Total	466

**Administrators  
with Departments  
6/15/2011**





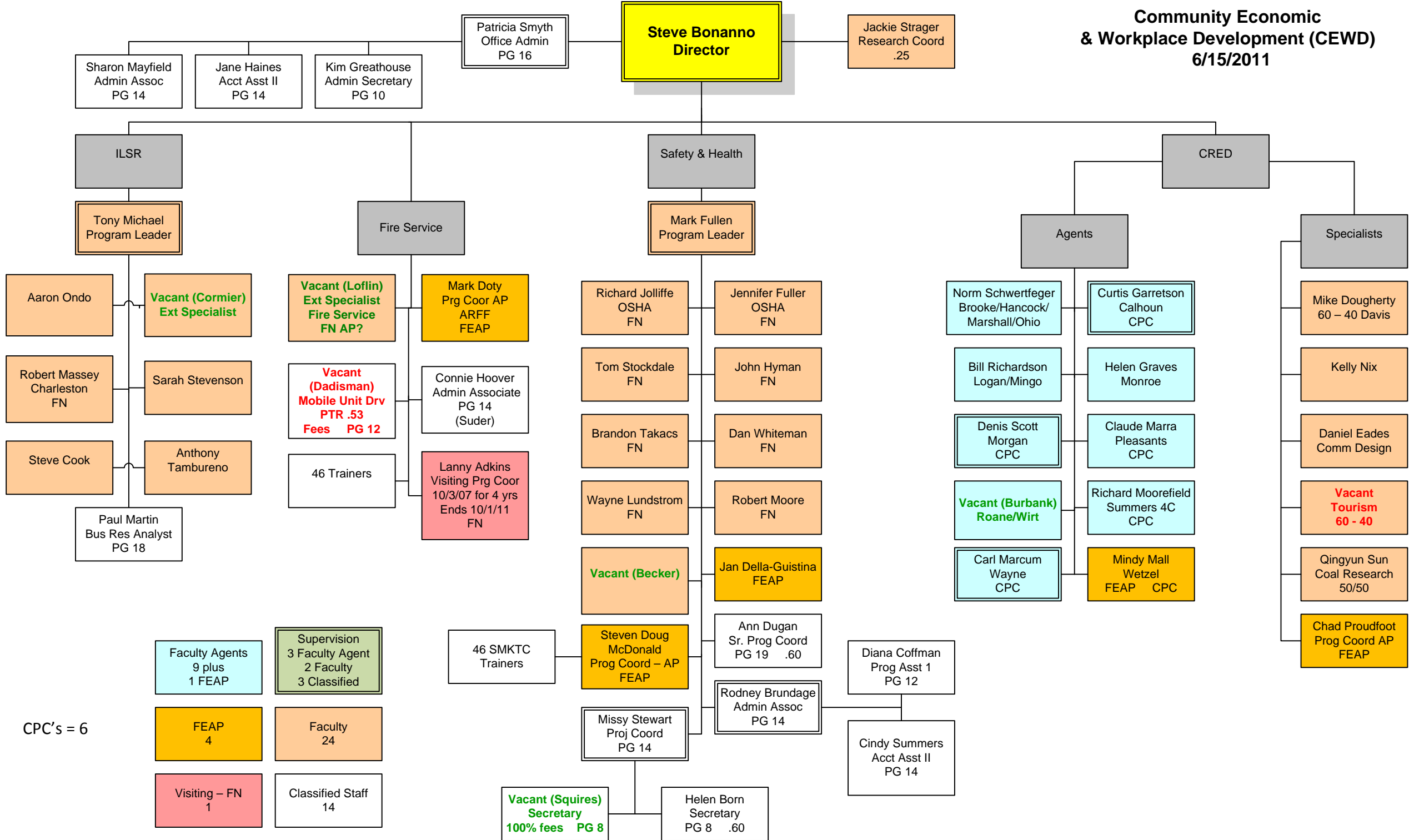
**WVU Paid County Employees  
6/15/2011**



**County Program Coordinators (CPC)**

ANR	=	24
4H	=	21
F&H	=	4
<u>CEWD</u>	=	<u>6</u>
<b>Total</b>	=	<b>55</b>

**Community Economic  
& Workplace Development (CEWD)  
6/15/2011**



**4-H Development**  
6/15/2011

**Debbie McDonald**  
Director

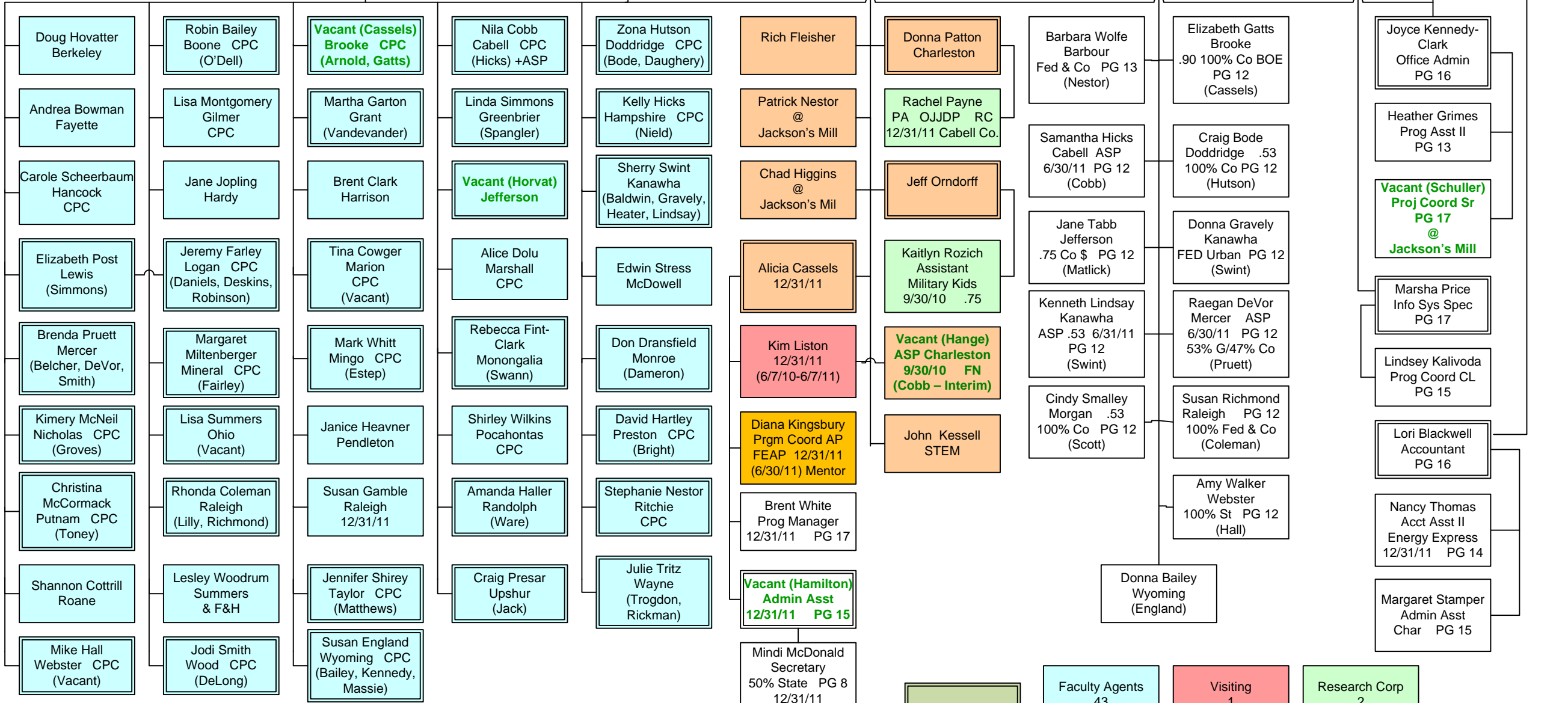
Bill Beckley  
Asst Director

Extension Agents

Specialists

Program Assistants  
(Supervised by County Agents)

Support Staff



CPC's = 21

Supervision  
Faculty Agents 30  
Faculty 3  
Classified 3

Faculty Agents  
43

Visiting  
1

Research Corp  
2

Faculty  
9  
1 - FN 8 - ET

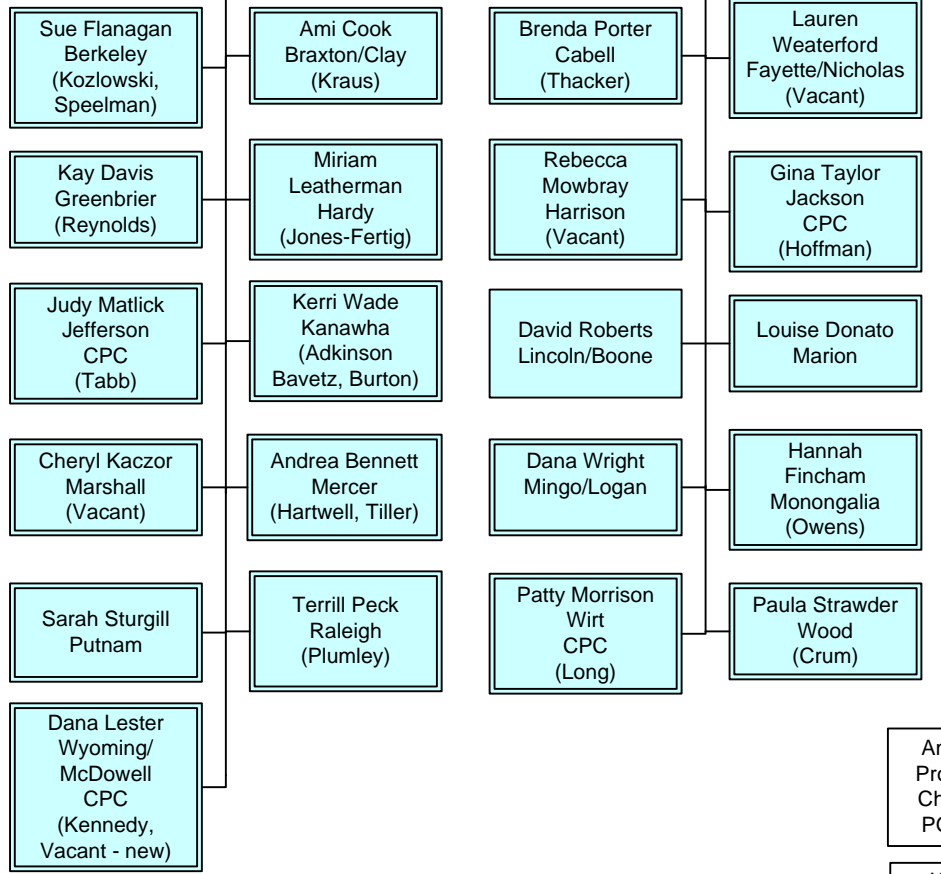
Classified Staff  
23

FEAP  
1

**Families & Health  
6/15/2011**

**Cindy Fitch  
Director**

**Extension Agents**



Karen Newton  
Program Mgr.  
3/29/11 PG 17

Faith Thompson  
Education Coord  
Diabetes  
8/31/11

50 Nutrition  
Outreach  
Instructors  
(see attached)

**Specialists**

Elaine Bowen  
Health

Emily Murphy  
Obesity

Jeff Olson  
SNAP-Ed  
Charleston  
9/30/11 FN

Amy Gannon  
(Chas.) 9/30/11  
Youth FN

Beverly  
McGettigan  
Adult FN  
9/30/11

Abbey  
Castleman  
Oper Coord.  
Charleston  
9/30/11 PG 16

Jane Riffe  
Families

Litha Sivanandan  
Food Safety &  
Training  
6 - 8 years  
100% Central  
9/16/10 Start

Ron Hatfield  
Financial Mgmt

Misty Buchanan  
Prog Coord - AP  
Charleston  
9/30/11 FEAP

Anthony Casey  
Prog Coord CL  
Charleston  
Summer Foods  
PG 15 9/30/11

Abby Dunbar  
Info Sys Spec  
Char PG 17  
9/30/11

**Program Assistants  
(Supervised by  
County Agent)**

Charlie Rickman  
Wayne  
PG 12 .75  
100% BOE & CC  
(Tritz)

Angela  
Faulkner-  
Vaglianti  
Prgm Manager  
6/30/11  
PG 17

Melissa Thomas  
Admin Sec  
HFHC  
6/30/11 .75

**Support**

Judy Cowell  
Office Admin.  
PG 16

**Vacant (Fluharty)  
Prog Asst II  
PG 13**

Sandra Wotring  
Acct Asst II  
PG 14

Beth Fluharty  
Prog Coord. CL  
PG 15

**Ann Berry  
Assoc Director  
Org  
Advancement**

Classified Staff  
13

Faculty Agents  
21

Faculty 8  
FN - 3 ET - 5

FEAP  
1

Research Corp  
2

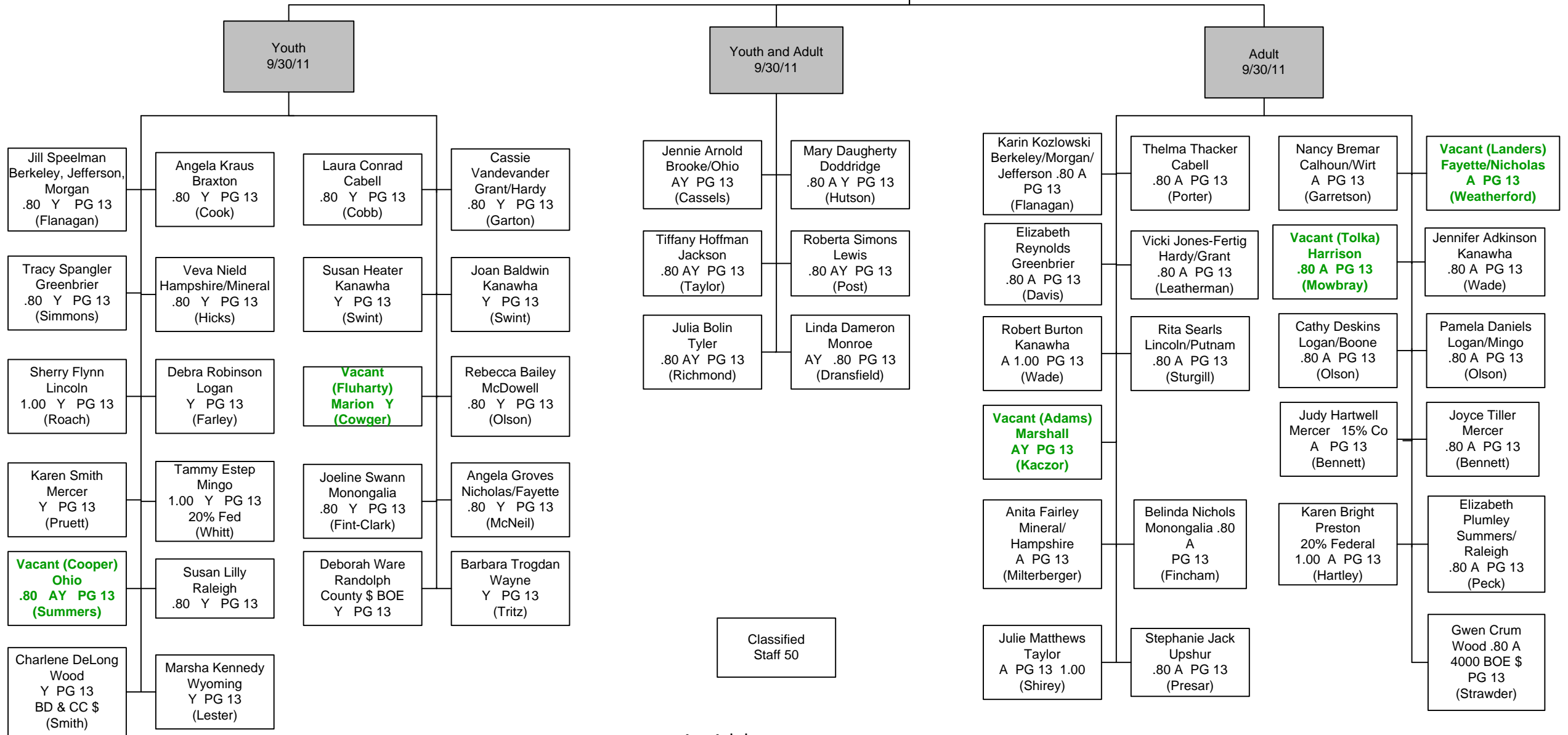
CPC's = 4

Supervision  
Faculty Agents 20  
Faculty 3  
Classified 4  
FEAP 0

A = Adult  
Y = Youth  
AY = Both Adult and Youth

**SNAP Ed  
6/15/2011**

County  
Extension  
Agents



A = Adult  
Y = Youth  
AY = Both Adult and Youth

Classified  
Staff 50

**Agriculture & Natural Resources**  
6/15/2011

**Jennifer Williams**  
Director

Dave McGill  
Asst Director  
70-30

Mark Aronhalt  
LAN Specialist  
12/88 PG 18

Tom McConnell  
Program Leader  
Sm Farm Ctr

Extension Agents

Carrie See  
Prgm Coord  
Small Farm Ctr  
FEAP

Specialists

Richmond  
Nyamekye  
PG 17

Support Staff

Andrew Walker  
Prog Asst 1  
Grant Co  
6/30/11 PG 12

Roger Nestor  
Barbour -- CPC  
Wolfe

Mike Shamblin  
Clay -- CPC

Gerald Leather  
Hampshire

John Porter  
Kanawha -- CPC

Jodi Richmond  
Mercer

Dave Seymour  
Pendleton -- CPC

Ronnie  
Helmondollar  
Randolph -- CPC

J. J. Barrett  
Wood

Mary Beth Bennett  
Berkeley -- CPC

Alexandra Straight  
Doddridge/Ritchie

Dave Workman  
Hardy -- CPC

Larry Campbell  
Harrison -- CPC

Stacey Hamric  
Mineral

Gregory Hamons  
Pocahontas

Brandy Brabham  
Roane -- CPC

Debbie Friend  
Braxton -- CPC  
(Slabaugh)

Brian Sparks  
Fayette/Nicholas  
CPC

Bruce Loyd  
Lewis -- CPC

April Roach  
Lincoln -- CPC  
(Flynn, Searls,  
Sizemore)

H. R. Scott  
Monongalia -- CPC

Bill Shockey  
Preston

Jennifer Poling  
Tucker -- CPC

Richard Sherman  
Cabell

Brad Smith  
Grant -- CPC  
(Sheep)  
50% Davis  
6/30/11

John Johnson  
Jackson - CPC

John Murray  
Marion/Taylor

Brian Wickline  
Monroe -- CPC

Chuck Tablott  
Putnam

Christina  
Richmond  
Tyler -- CPC  
(Bolin, Kemp)

John Workman  
Calhoun/Gilmer

John McCutcheon  
Greenbrier -- CPC

**Vacant  
Jefferson**

Rodney Wallbrown  
Mason -- CPC

John Miller  
Ohio -- CPC

Dave Richmond  
Raleigh -- CPC/  
Summers  
(Pennix)

Gary Rapping  
Upshur -- CPC

Rakesh Chandran  
70-30

Sheldon Owen  
Wildlife  
11/1/10

Phil Osborne  
80-20

Ken Semmens  
70-30  
FN

Matthew Ferrell  
Prog Coord -- AP  
FEAP  
100% Grant

Georgie Plaughter  
Prog Coor  
FEAP

Alan Biggs  
Kearneysville  
30-70

**Vacant (Hogmire)  
Entomology  
(4 mo on Blue at  
Davis)**

Darin Matlick  
60-40

Jeff Skousen  
65-35

Tom Basden

Sigrid Teets (PA)  
Barbour Co  
.27 PG 12  
8/31/09

**Visiting  
3 yrs  
Kearneysville**

Jean Woloshuk

John Jett  
FN

Wayne Wagner  
80-20

Ed Rayburn  
FN

Joshua Faulkner  
Ag & Evir Engr  
70/30 Lang/SCS

Joe McNeel  
2-98

Shawn Grushecky  
20-80

Joe Moritz  
Poultry  
25-75

Ben Spong  
80-20

Lewis Jett

Doolarie Singh-  
Knights  
60-40  
50% Central  
6 yrs -- 8 yrs

M. Mahfuzur  
Rahman  
Plant Path

Holly Spooner  
40-60  
Equine

Jim Pritchard  
Prog Coord AP  
18-82  
FEAP

Nola Wilson  
Proj Coord  
NE SARE  
100% RC

Elizabeth Blake  
Acct Asst II  
PG 14

Mary Higgins  
Program Asst I  
PG 12

Research Corp  
1

Visiting  
1

Classified Staff  
9

Supervision  
Faculty Agents 8  
Faculty 2  
Classified 1

Becky Casteel  
Admin Assoc  
PG 14

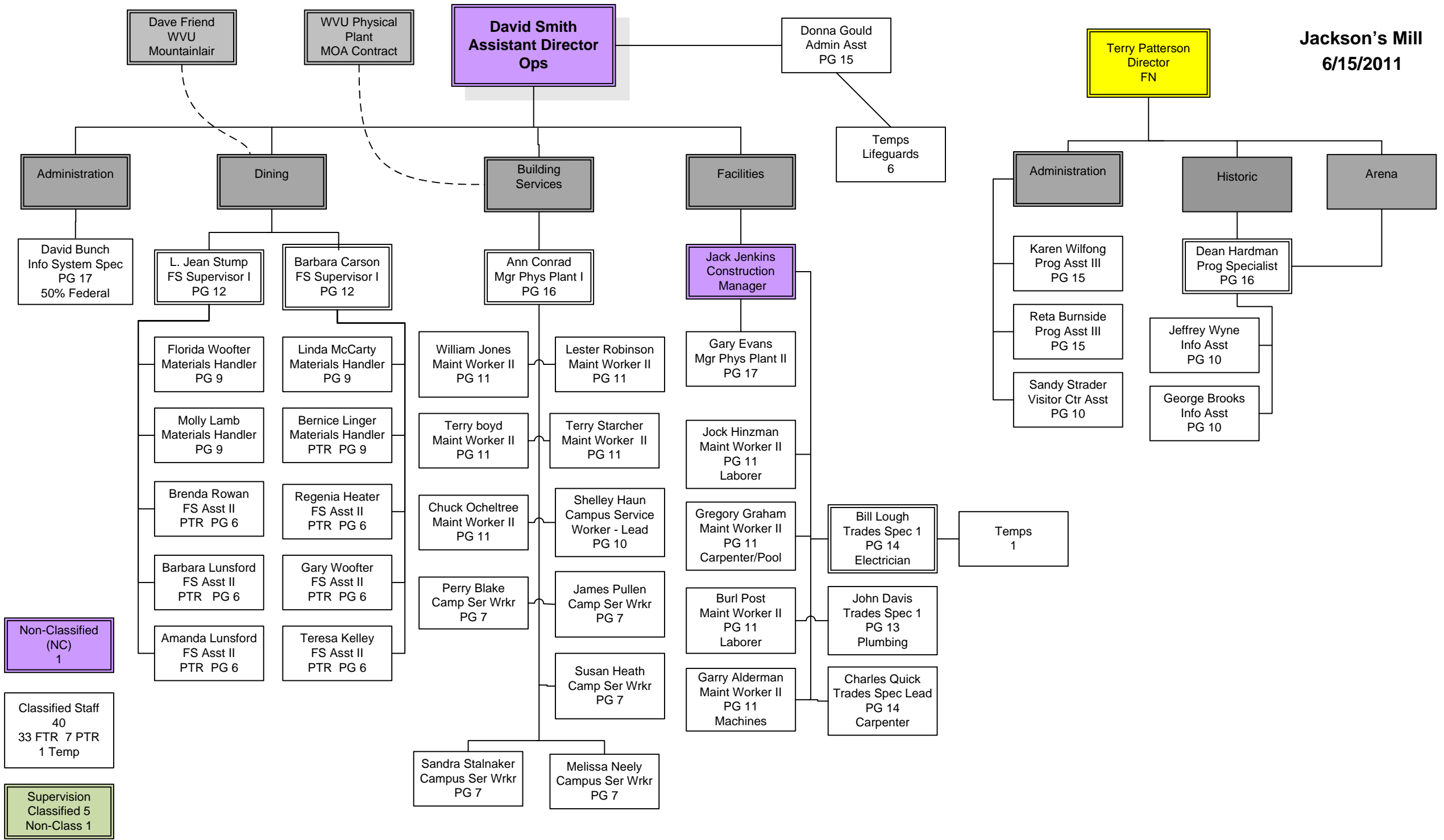
Tami Milush  
Acct Asst II  
ANR 65/App  
Hardwoods 35  
PG 14

FEAP  
4

Faculty Agents  
36

Faculty  
24

CPC's = 24



Non-Classified  
(NC)  
1

Classified Staff  
40  
33 FTR 7 PTR  
1 Temp

Supervision  
Classified 5  
Non-Class 1