



Organizational/Supervisory Charts

September 1, 2009

9/1/2009

Legend with Total WVU Paid Positions

Administrator
10

Career Transition
2

Faculty Agents
108

Classified Staff
203

Agents in
Training
3

County paid
positions
Secretary ~ 40
Prog Asst. ~20

Faculty
74

Research Corp
Classified
3

Non Classified
(NC)
7

FEAP
12

Visiting
1

Mountaineer Temp. & Grad Assistant positions
are not included

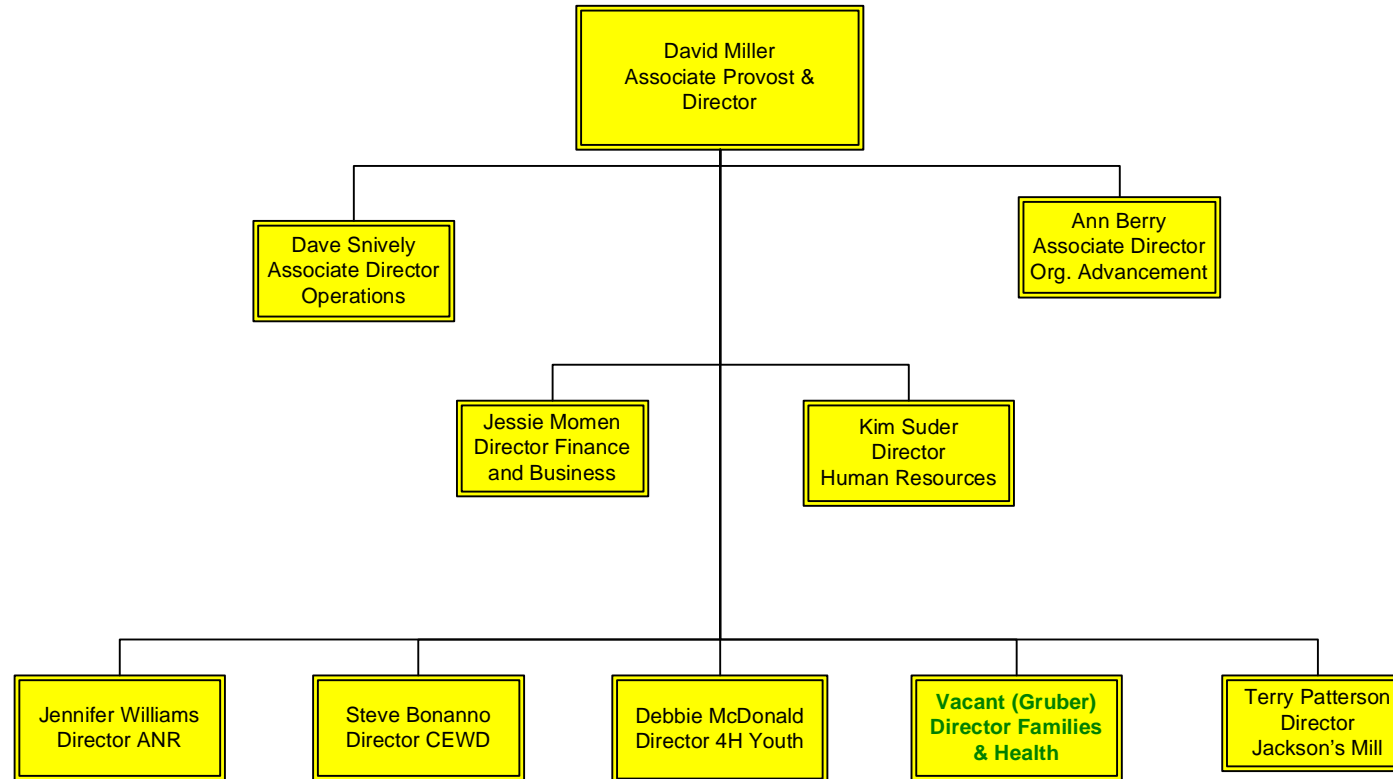
Position Key
Black lettering = filled positions
Red Lettering = unresolved vacancy
Green Lettering = approved vacancy

Supervision Key

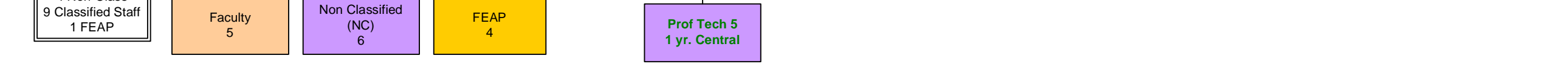
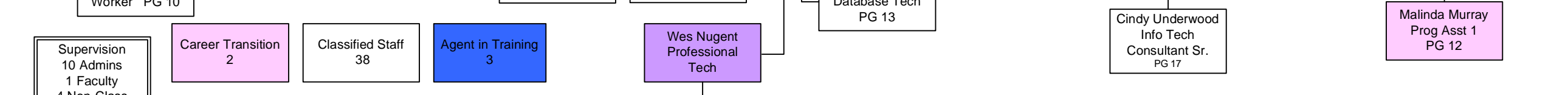
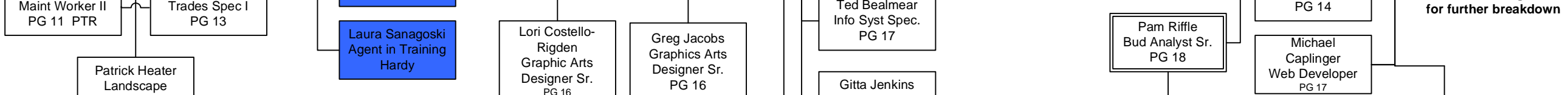
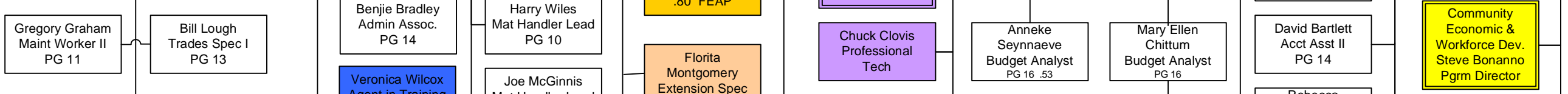
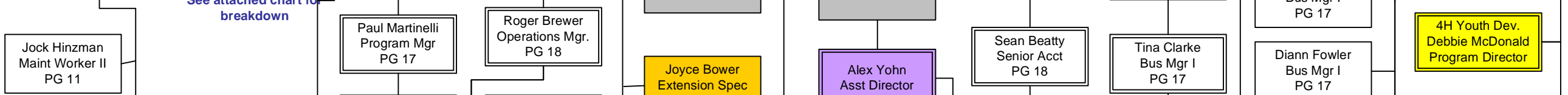
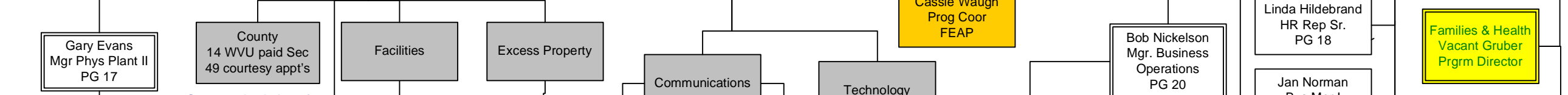
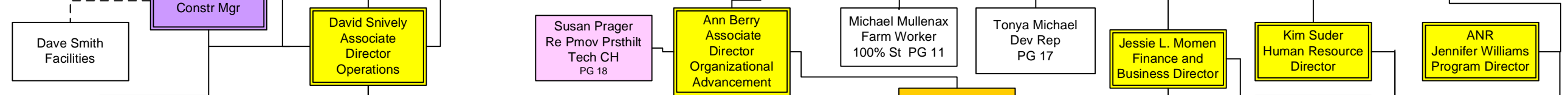
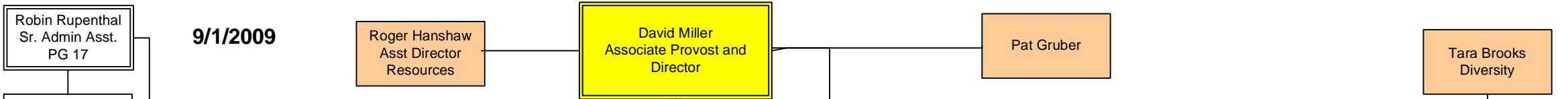
Admins	10
Faculty	14
Faculty Agents	60
Non-Class	4
FEAP	2
<u>Classified</u>	<u>23</u>
Total	113

WVU Paid Positions	423
County Paid Positions	<u>60</u>
Total	483

**Administrators with
Departments
9/1/2009**



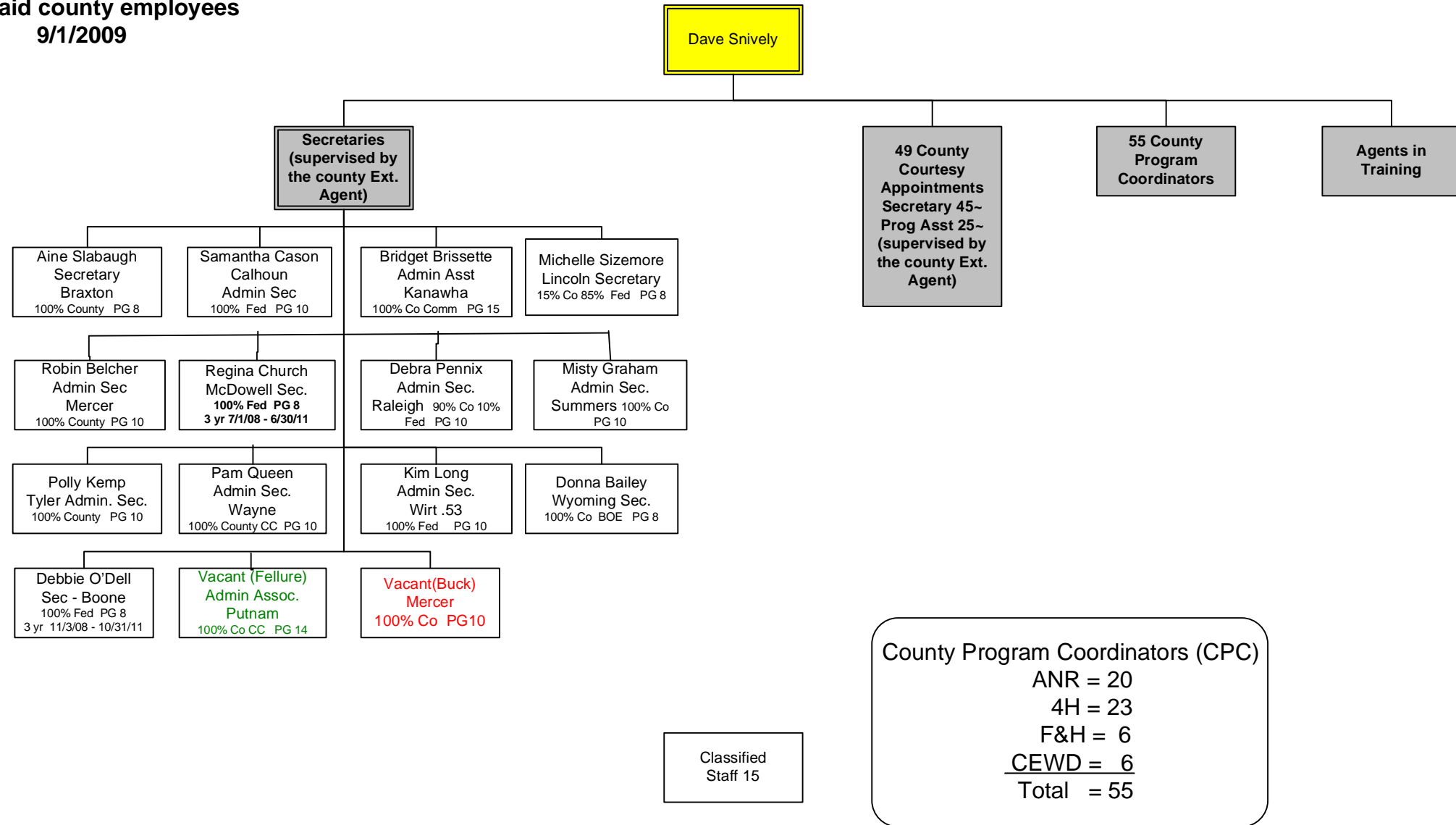
9/1/2009



See attached chart for breakdown

See attached org charts for further breakdown

**WVU paid county employees
9/1/2009**

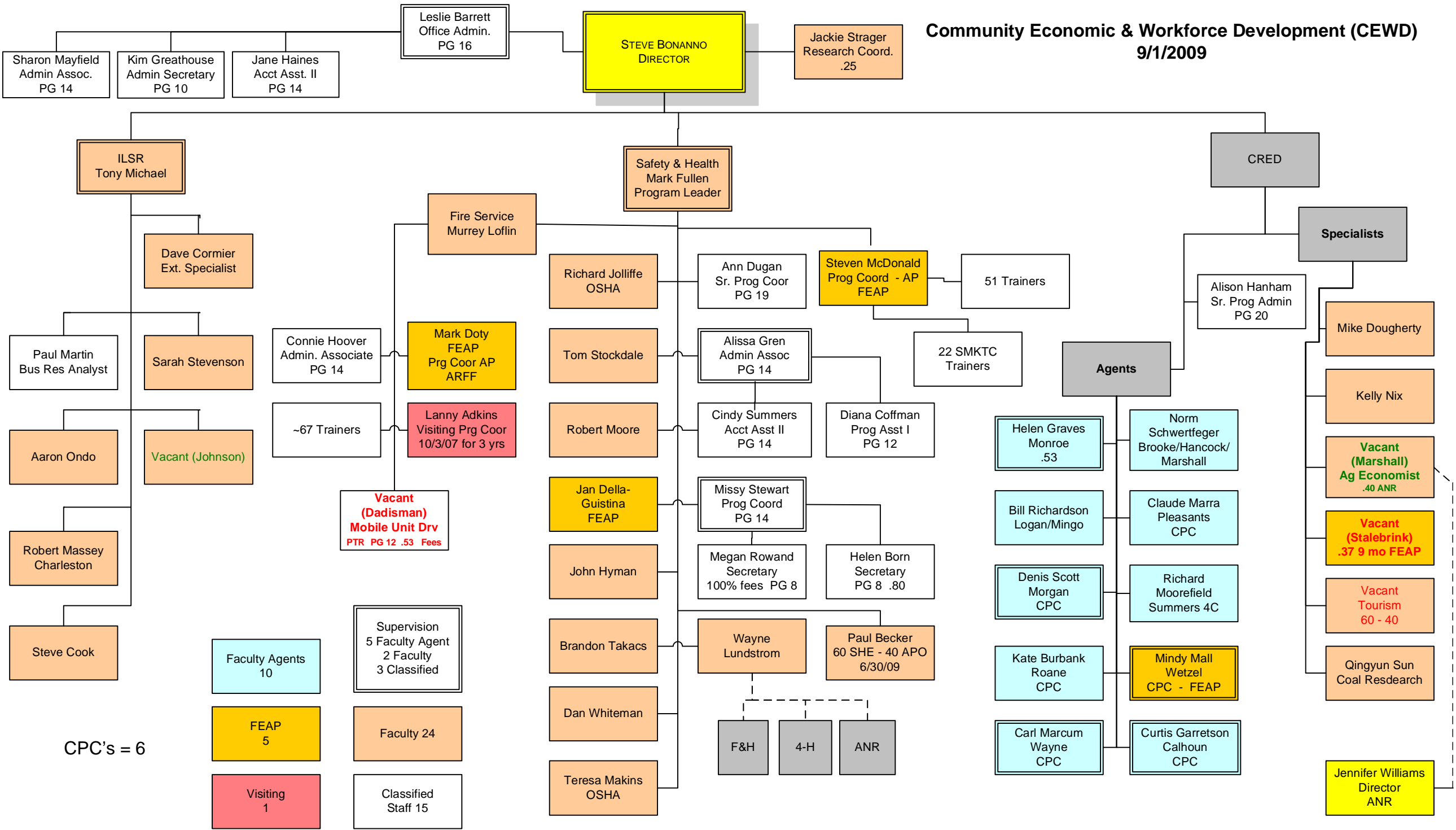


County Program Coordinators (CPC)
 ANR = 20
 4H = 23
 F&H = 6
CEWD = 6
 Total = 55

Classified
Staff 15

Community Economic & Workforce Development (CEWD)

9/1/2009



CPC's = 6

Faculty Agents
10

FEAP
5

Visiting
1

Supervision
5 Faculty Agent
2 Faculty
3 Classified

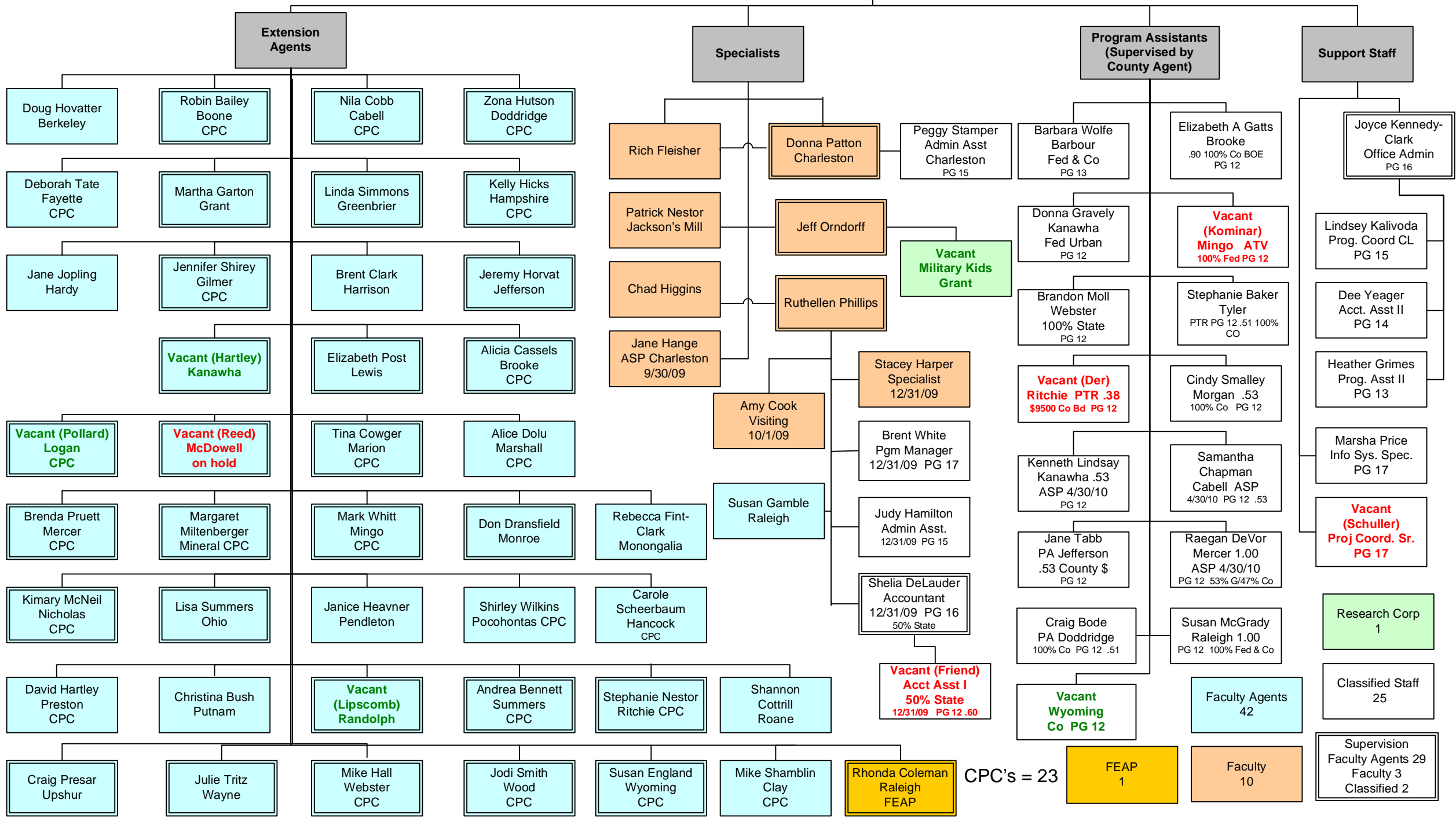
Faculty 24

Classified
Staff 15

4-H Youth Development
9/1/2009

Debbie McDonald
Director

Bill Beckley
Asst Director



CPC's = 23

FEAP
1

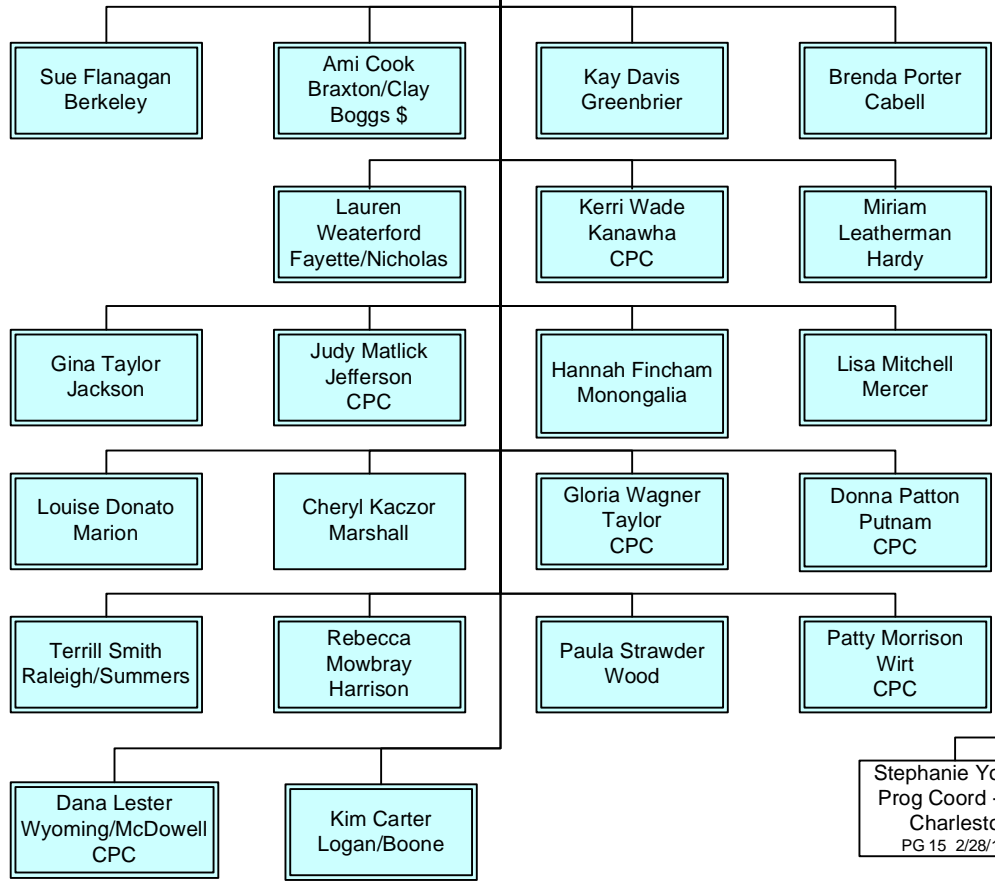
Faculty
10

Supervision
Faculty Agents 29
Faculty 3
Classified 2

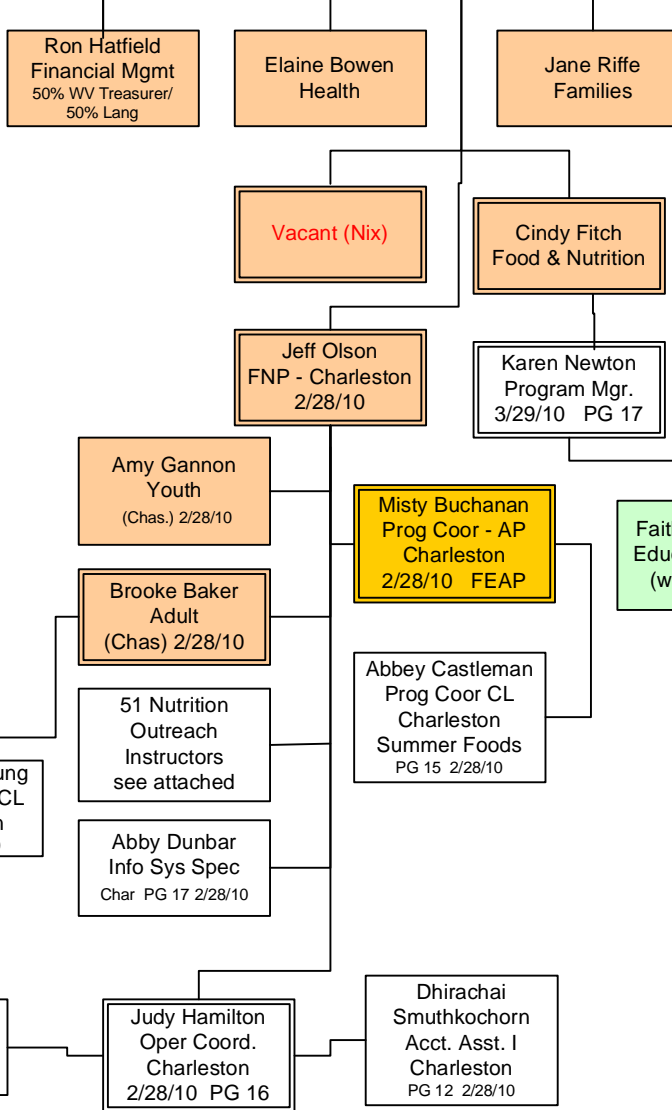
Families & Health
9/1/2009

Dave Snively
Interim Director

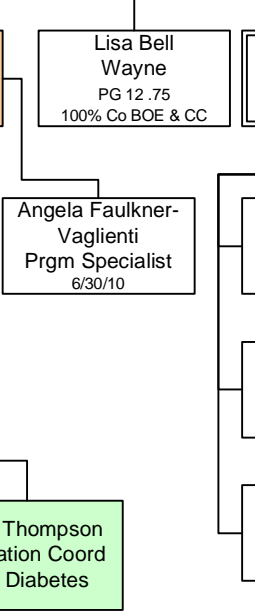
Extension Agents



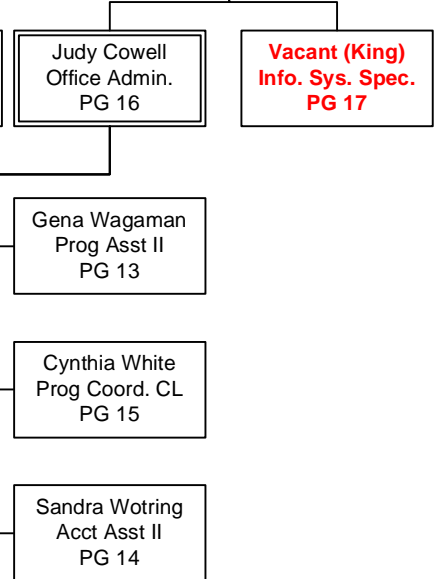
Specialists



Program Assistants (Supervised by County Agent)



Support



Classified Staff 14

Faculty Agents 21

FEAP 1

CPC's = 6

Supervision Faculty Agents 20
Faculty 4
Classified 3
FEAP 1

Faculty 8

Research Corp 1

A = Adult
Y = Youth
AY = Both Adult and Youth

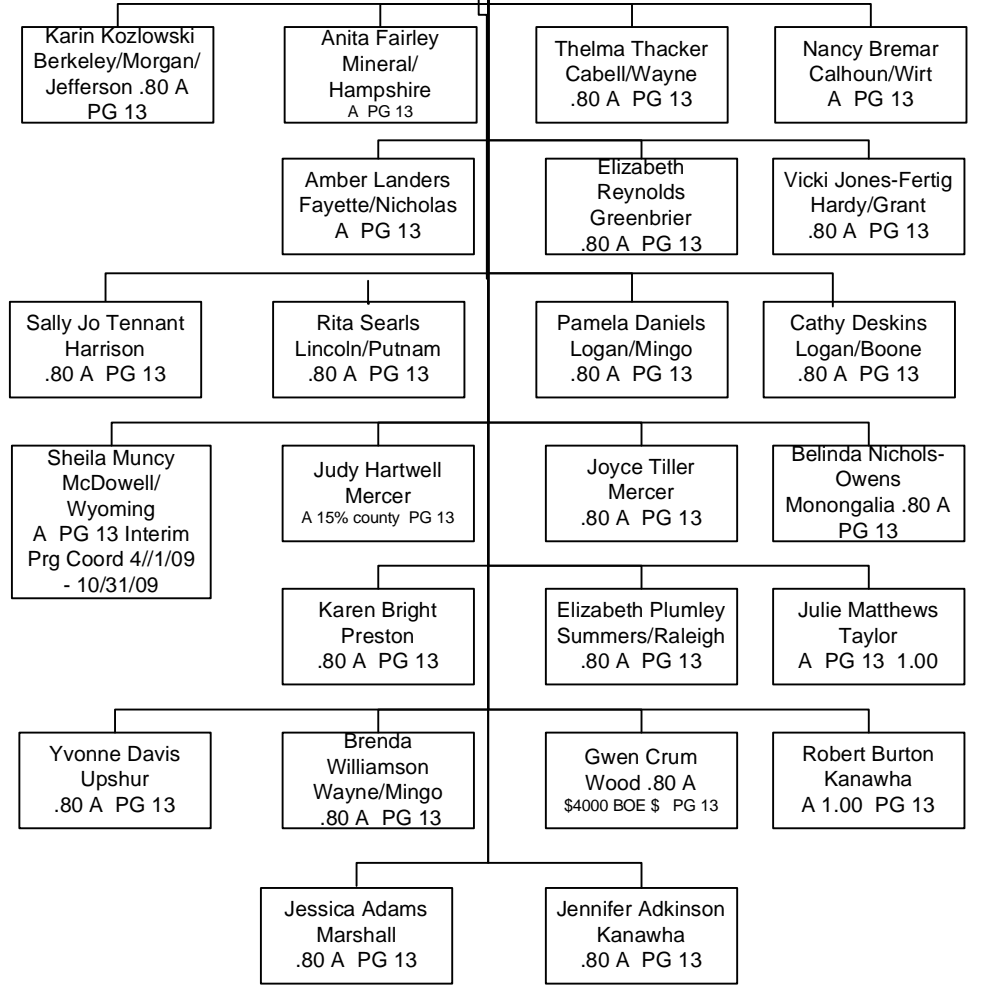
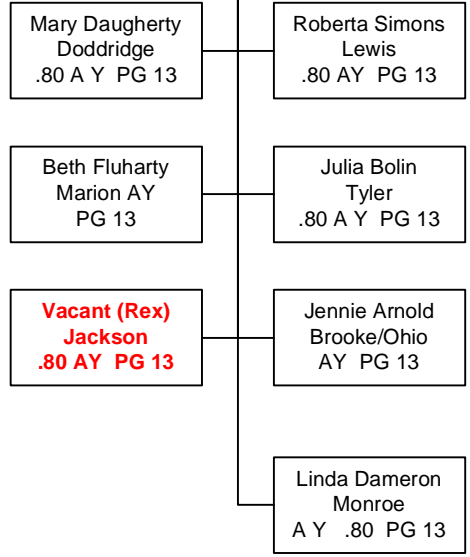
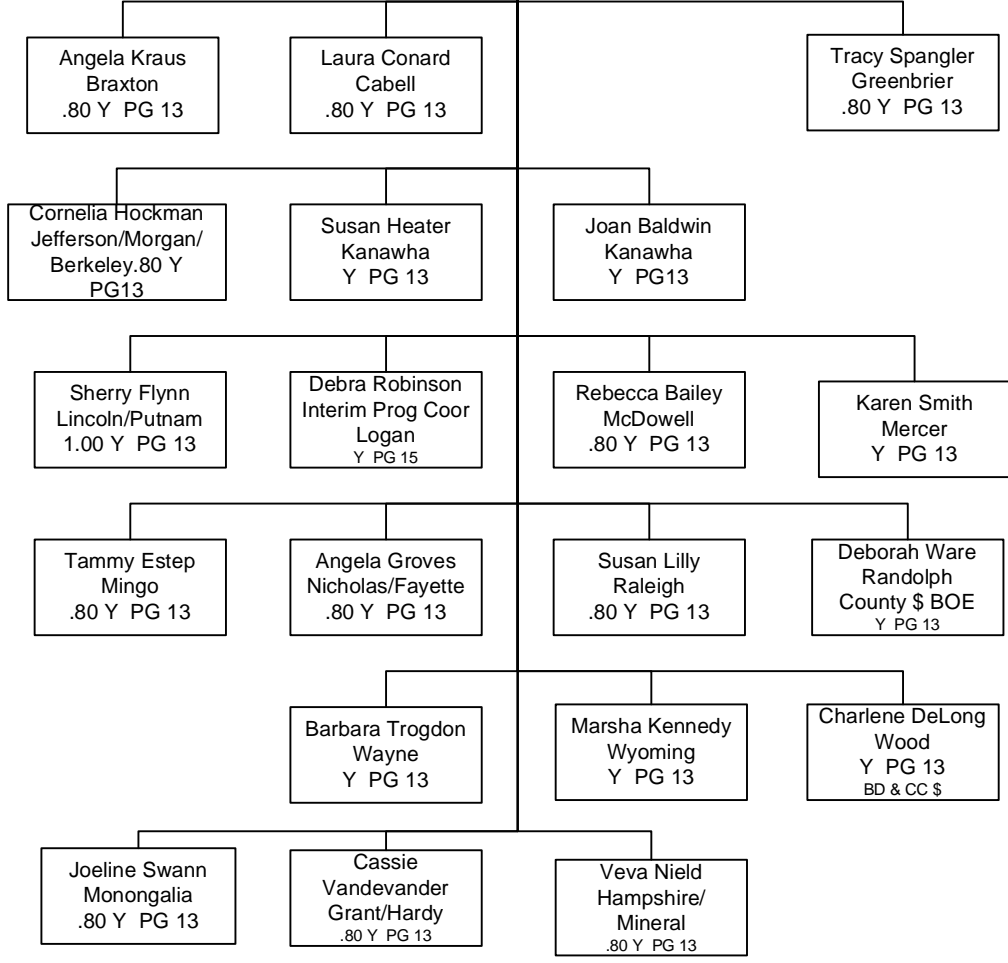
Family Nutrition Program (FNP)
9/1/2009

County Extension Agents

Youth
9/30/09

Youth and Adult
9/30/09

Adult
9/30/09

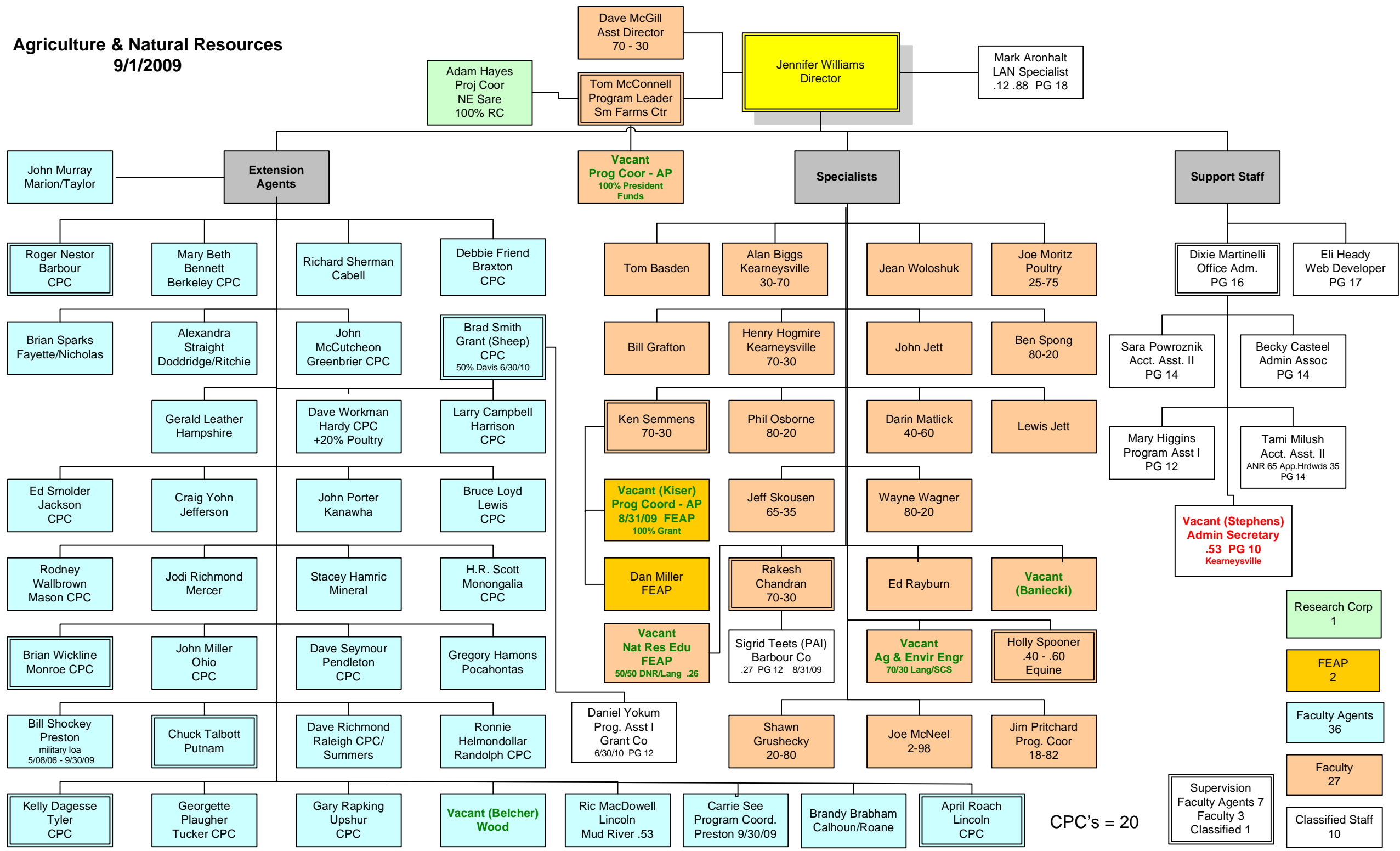


Classified Staff 51

A = Adult
 Y = Youth
 AY = Both Adult and Youth

Agriculture & Natural Resources

9/1/2009



CPC's = 20

Dave Friend
WVU
Mountainlair

WVU Physical Plant
MOA Contract

Terry Patterson
Program Director

David Parker
Asst Director
Marketing & Sales

Operations

Beverley Putnam
Office Admin. Sr.
PG 18

Donna Gould
Admin Asst
PG 15

Food Services

L. Jean Stump
FS Supervisor I
PG 12

Barbara Carson
FS Supervisor I
PG 12

Juanita Gaines
Materials Handler
PG 9

Linda McCarty
Materials Handler
PG 9

Molly Lamb
Materials Handler

Bernice Linger
Materials Handler
PTR PG 9

Brenda Rowan
FS Asst II
PTR PG 6

Reginia Heater
FS Asst II
PTR PG 6

Barbara Lunsford
FS Asst II
PTR PG 6

Gary Woofter
FS Asst II
PTR PG 6

Amanda Lunsford
FS Asst II
PTR PG 6

Teresa Kelley
FS Asst II
PTR PG 6

Kelley (Vacant)
FS Asst II
PTR PG 6

Facilities Management & Services

Ann Conrad
Mgr Phys Plant I
PG 16

William Jones
Maint Worker II
PG 11

Lester Robinson
Maint Worker II
PG 11

Harold Eubank
Maint Worker II
PG 11

Martha Straley
Campus Ser Wrkr
.80 PG 7

Terry Starcher
Maint Worker II
PG 11

Shelley Haun
Campus Service Worker - Lead
PG 10

Chuck Ocheltree
Maint Worker II
PG 11

Misti Robinson
Camp Ser Wrkr
PG 7

Martha Posey
Campus Service Worker - Lead
PG 10

Susan Heath
Camp Ser Wrkr
PG 7

Vacant (Donnellan)
Admin Assoc
50% PG 14

Event & Guest Services

Karen Wilfong
Prog Asst III
PG 15

Reta Burnside
Prog Asst III
PG 15

Sandy Strader
Visitor Ctr Asst
PG 10

Vacant (Donnellan)
Admin Assoc
50% PG 14

Program Unit

Experiential & Team Program Development

Historic

Marie Burleigh
Comm/Marketing PR Specialist
PG 16

Dean Hardman
Prog Specialist
PG 16

Jeffrey Wyne
Info Asst
PG 10

George Brooks
Info Asst
PG 10

Leanore Beachem
Cashier - Lead
PTR PG 8

Non-Class 1

Classified Staff
35
26 FTR 9 PTR
1 Temps

Supervision
Classified 5